

## SO-LOW MODEL CH40-25

### CHEST STYLE FREEZER TO -40°C

<b>Capacity [ Cu. Ft. ]</b>	<b>25 Cubic Feet</b>
<b>Capacity [ Liters ]</b>	<b>707 Liters</b>
<b>Temperature Range [ °C ]</b>	<b>-0°C to -40°C</b>
<b>Temperature Range [ °F ]</b>	<b>+32°F to -40°F</b>

Dimensions (W x D x H)

Exterior [ Inches ] 83.25" x 32" x 33.75"

Exterior [ Centimeters ] 211 x 81 x 85"

Interior [ Inches ] 76.75" x 23.5" x 24.88"

Interior [ Centimeters ] 194 x 59 x 63

#### Electrical:

Voltage: 115 Volts 60 Hertz 1 Phase

Amperage: 15 Amp Dedicated Line

3 Running Amps

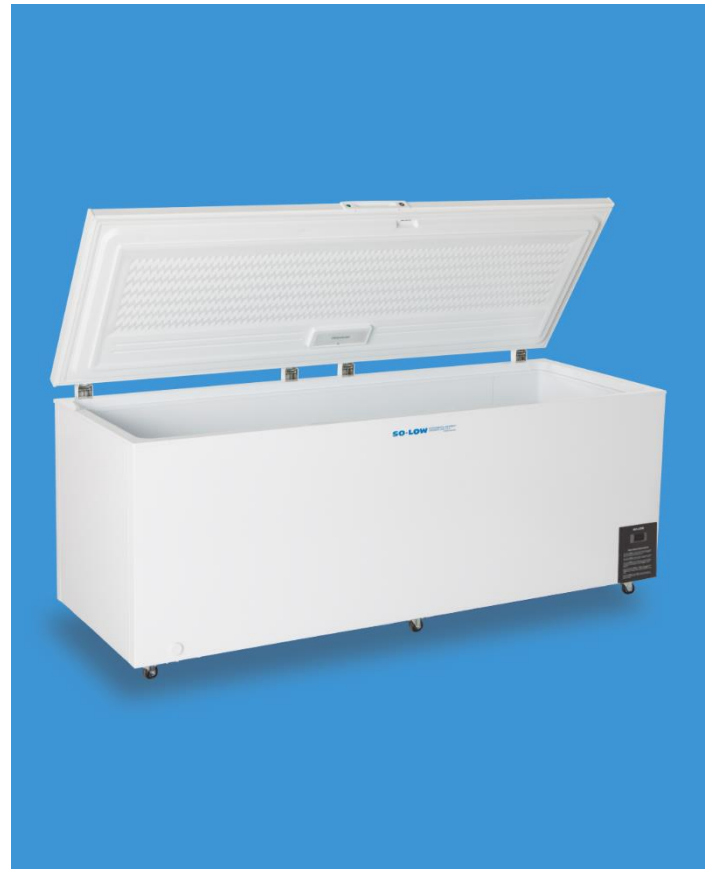
NEMA Configuration NEMA 5-15

Certification(s) ETL Listed

#### Construction:

Temperature Control	Digital Display
	High / Low Alarm
	Min / Max Temperature
	Dry Contacts
Alarm Relay	Manual
Defrost	Top Opening Lid
Opening	No
Lockable Lid/Door	Steel
Interior / Exterior	Polyurethane Foam
Insulation	Hermetic Compressor
Compressors	R404A
Primary Refrigerant(s)	Gravity Flow
Air Circulation	4, Lockable
Casters	None
Shelving	700
Approximate BTU/Hour	55
Approximate Decibels	

IMAGE BELOW DOES NOT SHOW OPTIONAL ACCESSORIES



**Warranty** 1 Year Parts & 90 Days Labor